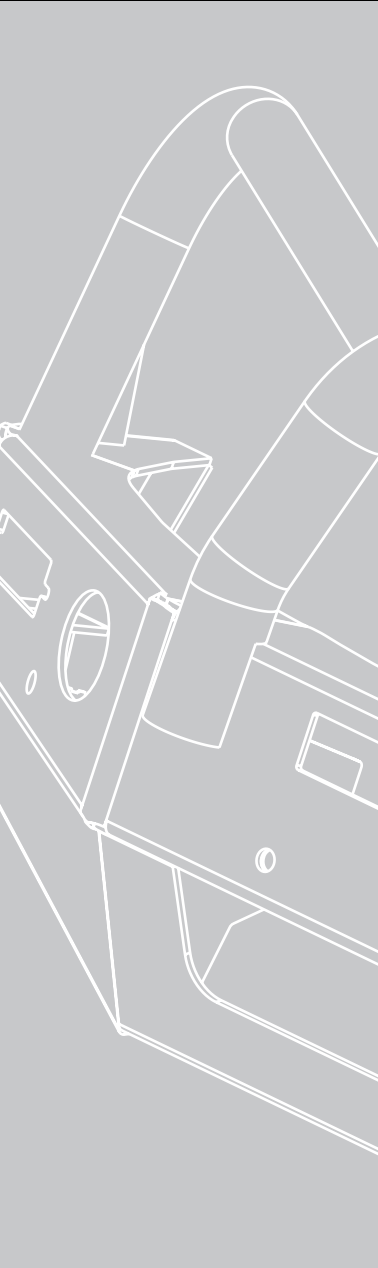




**Lighter  
Stronger  
Better!**

**Strongest Built  
Australian Made  
Lifetime Warranty**

**BRE21SY**



# **Fitting Guide & Owners Manual**

## **Renault Master Pro MY20on**

Big Tube Bar  
VEHICLE FRONTAL PROTECTION SYSTEM (VFPS)  
FOR AIR BAG & ADR COMPLIANT VEHICLES

# Index

---

## **Pages 4-5**

ECB's Benefits  
Product Care

## **Pages 6-7**

Stage 1 - Vehicle Testing and Preparation  
Stage 2 - Loosen top grille  
Stage 3 - Remove grille  
Stage 4 - Remove lower bumper  
Stage 5 - Remove lower wind deflectors  
Stage 6 - Remove bumper support rail

## **Pages 8-9**

Stage 7 - Fit washer plate  
Stage 8 - Fit steel gusset plate  
Stages 9 -10 Fit steel mounting bracket  
Stage 11 - Wind deflector refit  
Stage 12 - Indicator wiring

## **Pages 10-11**

Stage 12 - Trim bumper  
Stage 13 - Refit bumper  
Stage 14 - Fit Indicators  
Stage 15 - Attach clip lock trim  
Stage 16 - Fit protection bar  
Stage 17 - Align Protection bar

## **Pages 12-13**

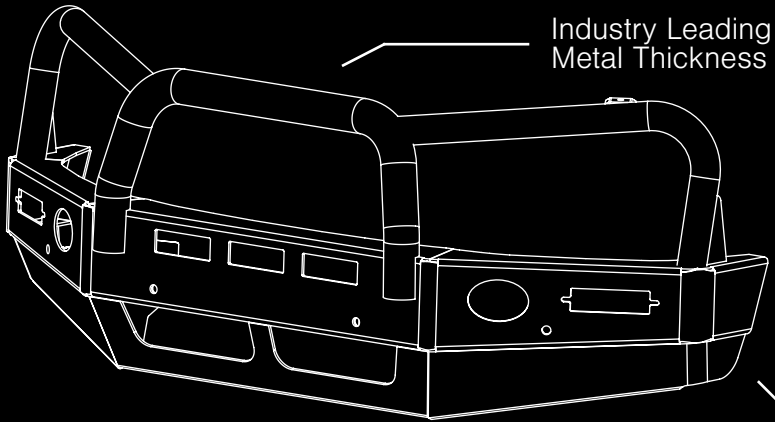
Finished Product  
Final Checks & Fitting Kit

## **Pages 14-15**

Warranty Registration

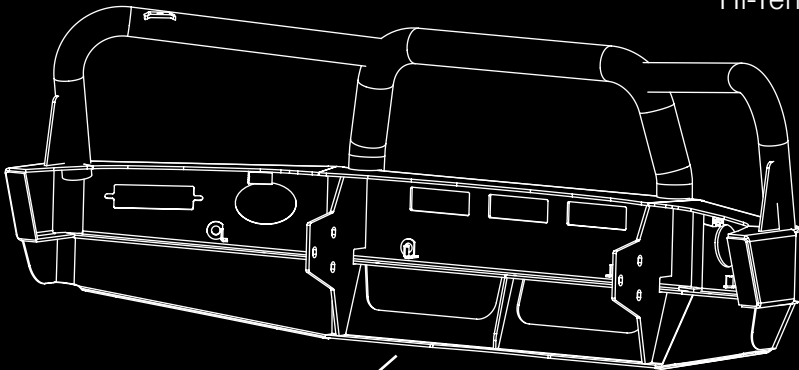
# The Features of ECB

---



Industry Leading  
Metal Thickness

6mm Thick  
Hi-Tensile Alloy



Unmatched  
Strength

Fully Welded  
Construction

# ECB's Benefits

---

## **Built to Perform - Not to a Price**

ECB are proud to claim that their channels are not jigsaw puzzles that are bolted together, or even multiple sections welded together. Where any welding is required, it is done to the highest standards by qualified welders, not machines.

## **Anti-Corrosive Nature of Alloy**

The composition of ECB's alloy has a very high resistance to corrosion. Rust not only looks unappealing but greatly reduces the strength of the metal. Rust can and will weaken the structural integrity of a steel bullbar effectively rendering it useless over time.

## **Australian Made**

Established in 1971, we utilise over 46 years of experience designing, engineering and building products in Australia to suit Australian conditions. We can ensure the best quality controls and help support the local economy and employ over 90 proud Australians.

## **Weight Saving Benefits**

An ECB alloy bullbar is typically half the weight of a steel bullbar. Unnecessary suspension upgrades are not required. The reduced weight also contributes to increased fuel economy and less wear and tear on tyres, suspension and braking components.

## **Welds That Work**

ECB uses only the strongest welds and welding techniques to ensure every product is as structurally sound as possible. MIG (Metal Inert Gas) welding techniques are employed ensuring the welds are as thick as the thickest section of alloy's being joined together.

## **Lifetime Warranty**

ECB provide a lifetime warranty and consumer guarantee on all of our manufactured products. This guarantee highlights the confidence in our ability and provides complete peace of mind for your purchase for the lifetime you own your vehicle.

# Product Care

---

## Polished Products

Being a premium mirror polished finish, regular maintenance will be required to keep that iconic ECB shine. We recommend using our own brand of Aluminium Polish. This formula has been tried and tested and in our opinion is the world's best standard.

**Directions:** Apply a small quantity of Aluminium Polish to a clean soft cloth and rub the metal surface. The longer the rubbing the brighter the surface becomes. Wipe off Aluminium Polish with clean soft cloth. Also suitable for motorised buffing machines.

**Note:** There are more specific details on the polish bottle. Please read before use.

## Powdercoated Products

Our powdercoated finishes are very low maintenance. Infact there is actually very little you will ever need to do for this product. Just clean it as you would your car and it will stay looking good as new.

## ECB Aluminium Polish

When you're looking for that showroom finish look for your polished automotive products, you can depend on the no compromise quality of East Coast Bullbars Aluminium Polish. This specifically designed product is the best polish available and we guarantee that this \$#!+ works. With over 40 years of manufacturing polished alloy products we have trialed a large range of different polishes on the market and believe without a doubt that nothing beats the finish quality of East Coast Bullbars Aluminium Polish.

East Coast Bullbars Aluminium Polish is excellent for use by hand and is ideal for polished bullbars, nudge bar and stainless steel products. This polish will clean, polish and protect your product from the elements whilst bringing your products back to that showroom finish look.



# BRE21SY

## Stage 1

- Test drive vehicle to ensure all driver assists are correctly working and to gauge effectiveness. Park on a flat level surface.
- Apply parking brake and lift bonnet.
- Unwrap ECB Protection bar and disconnect mounts. Discard bolts.
- Ensure these instructions are left with the vehicle owner and/or operator.



## Stage 2

- Remove four (4) T30 Torx head screws from top of grille.
- Release bonnet cable from bonnet release latch.



**CAUTION:** Do not close bonnet with bonnet latch disconnected

## Stage 3

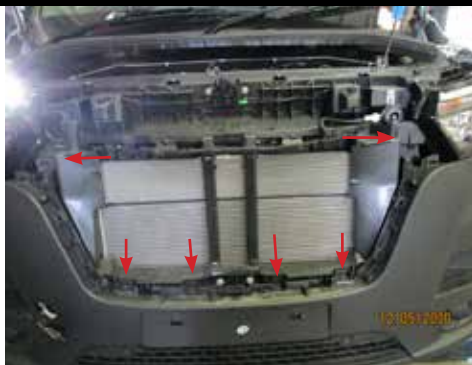
- Pull grille up at top and forward around bottom to release holding clips.
- Remove grille.



# RENUALT MASTER PRO MY20-

## Stage 4

- Remove six (6) T30 Torx head screws from top of bumper, three (3) T 30 Torx head screws from inner wheel arch (per side) and three T30 Torx head screws from underside of bumper.
- Remove bumper cover.



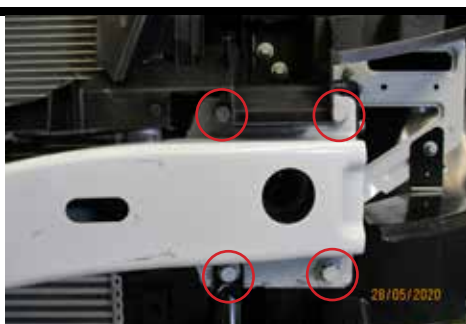
## Stage 5

- To allow access to two (2) inner bolts, cut hole in plastic radiator support rail.  
**NOTE:** Try to remove only the amount required to access the bolt.
- Remove lower wind deflectors and retain



## Stage 6

- Remove bumper support rail, four (4) 16mm head bolts, and one (1) 13mm head bolt in centre of rail.



# BRE21SY

## Stage 7

- Using ECB 4mm steel washer plate (supplied) as a guide, place on outside of chassis rail mark and drill two (2) 10mm holes through rail.
- On right hand side, drill through bracing for tow hook on inside of rail.
- Washer plate must be located as per photo. Drill needs to be level and straight to ensure internal plate is in correct position.



**Blow filings clear and treat all exposed metal with a rust inhibitor.**

## Stage 8

- Fit ECB steel gusset plate (supplied) onto inside of chassis rail using the washer plate (supplied) on the outside of the rail.
- For top hole use one (1) M10 x 1.5 x 120mm bolts, M10 flat washers, M10 spring washers and M10 nuts (supplied)(per side).
- For lower hole use one (1) M10 x 1.5 x 120mm bolt, M10 flat washer, M10 spring washer with nut and washer on 300mm wire (supplied) (per side).



## Stage 9

- Fit ECB steel mounting bracket (supplied) onto chassis rail, centre to chassis rail and secure with M10 x 1.5 x 35mm bolts, M10 flat washers and M10 spring washers (supplied) in outer holes.
- Use original bolt previously removed for centre of hole in steel mounting bracket.
- Align mount and **tighten all bolts.**





# RENUALT MASTER PRO MY20-

## Stage 9

- Using ECB steel mounting bracket as a guide, drill two (2) 10mm holes through end of chassis rail and gusset (per side).
- **Blow filings clear and treat all exposed metal with a rust inhibitor.**
- Fit M10 x 1.5 x 35mm bolts, M10 flat washers, M10 spring washers and M10 nuts (supplied).
- **Tighten all bolts.**



## Stage 10

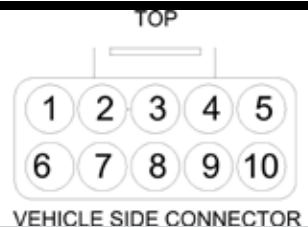
- Trim lower wind deflectors to fit around steel mounting brackets and refit.



## Stage 11

- Splice ECB wiring harness into wiring harness behind headlight using cable locks (supplied). Ensure harness is clear of sharp edges and moving parts.

Pin Number	Colour	Use
3	White/ Black	DRL
4	Tan/ Black	Park
6	Brown	Indicator
9/10	Black	Earth (ground)



# BRE21SY

## Stage 12

- Tape area to be trimmed to avoid any damage to bumper.
- Using template provided mark bumper. Double check by measuring against the steel mounting bracket before cutting.
- Cut out with jigsaw or similar tool.

**CAUTION: As some photocopiers differ  
Check scale of template before use.**



## Stage 13

- Refit bumper as per reverse of steps 2 to 4.



## Stage 14

- Fit ECB LED indicator / DRL / park lights into protection bar as per instructions supplied with the LED indicator kit. NOTE: Ensure park light is to top.



# RENUALT MASTER PRO MY20-

## Stage 15

- Attach 6mm clip lock trim (supplied) to top of ECB protection bar and air vents in lower skirt. In skirt NOTE: Trim off lower edge on an angle so trim will sit flush with end of protection bar. Also fit to air vents bottom skirt.



## Stage 16

- Fit protection bar to steel mounting brackets using M12 x 1.75 x 40mm bolts, flat washers, spring washers and nuts (supplied).



## Stage 17

- Align protection bar with vehicle and tighten all bolts. Ensure towpin is checked for fitment.
- Connect indicators/DRL/park lights and check correct operation.
- Place towpin in vehicle tool kit and make customer aware of requirement of its use.



# Final Checks & Installation Kit

---

## Ensure Number Plate is Clearly Visible

Note: When fitting/refitting the licence plate to the vehicle, ensure there is no obstruction to licence plate vision in accordance with local authorities. If required relocate licence plate to an alternate location.

## Further VFPS Notes

1. Do not attach VFPS to the vehicle using anchorages not intended for this purpose (e.g. engine mounting bolts).
2. Do not use this product for any vehicle make or model, other than those specified by the VFPS manufacturer.
3. Do not remove the plaque or label from the VFPS.
4. Do not modify the structure of the VFPS in any way.
5. No accessory or fitment should project forward of the VFPS forward profile.
6. **Ensure these instructions are left with the vehicle owner and/or operator.**

## Important Information

Periodically check bolts and nuts for correct tightness, especially if traveling on rough roads.

## Installation Kit

1 - Steel mounting bracket	22 - M10 Flat washers
2 - 6mm Steel gussets	16 - M10 spring washers
2 - 4mm Steel washer plates	6 - M10 x 1.5 nuts
1 - Tow pin	2 - M10 x 1.5 nut & washer on 300mm wire
6 - M12 x 1.75 x 40mm bolts	1 - Pair ECB Indicator / DRL / Park Lights
12 - M12 Flat washers	2 - 500mm lengths 3 core wire
6 - M12 Spring washers	6 - Crimp joiners
6 - M12 x 1.75 nuts	6 - Cable locks
4 - M10 x 1.5 x 120mm bolts	1 - 2500mm length 6mm clip lock
12 - M10 x 1.5 x 35mm bolts	2 - 1000mm lengths 6mm clip lock

# Finished Product

---



# Warranty Registration

---

## Contact Details

Name: \_\_\_\_\_

Address: \_\_\_\_\_

\_\_\_\_\_

Product: \_\_\_\_\_

Email: \_\_\_\_\_

Phone: \_\_\_\_\_

Work Order Number: \_\_\_\_\_

You can find this on the silver label  
of your ECB product.

By submitting this registration you automatically subscribe to ECB's mail outs.  
You can unsubscribe at any time.

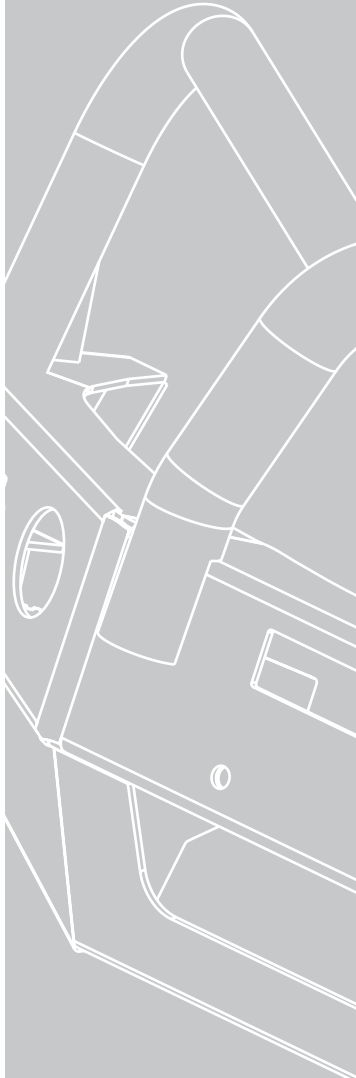
## Register Online

For online registration please go online to [www.ecb.com.au/warranty-registration](http://www.ecb.com.au/warranty-registration)  
If you have any questions please contact our national office on 1800 069 145 or  
[www.ecb.com.au](http://www.ecb.com.au).



**PN: BRE21SY**  
**Please post to: PO Box 122,**  
**Margate QLD 4019**

REPLACES: N/A  
REVISED: 13.07.20



1800 069 145  
[www.ecb.com.au](http://www.ecb.com.au)

## **Strongest Built Australian Made Lifetime Warranty**

29 Snook St, Clontarf QLD 4019  
PO Box 122, Margate QLD 4019